

BLACKPOOL CAST IRON TRAM SHELTERS



Once a common site in Blackpool, this type of shelter has now almost disappeared. Made of prefabricated sections, they came in many different variations, long and short, entrances on the sides or ends, different roof types, etc.

INSTRUCTIONS

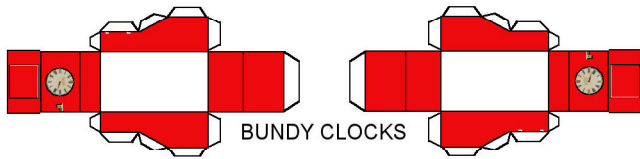
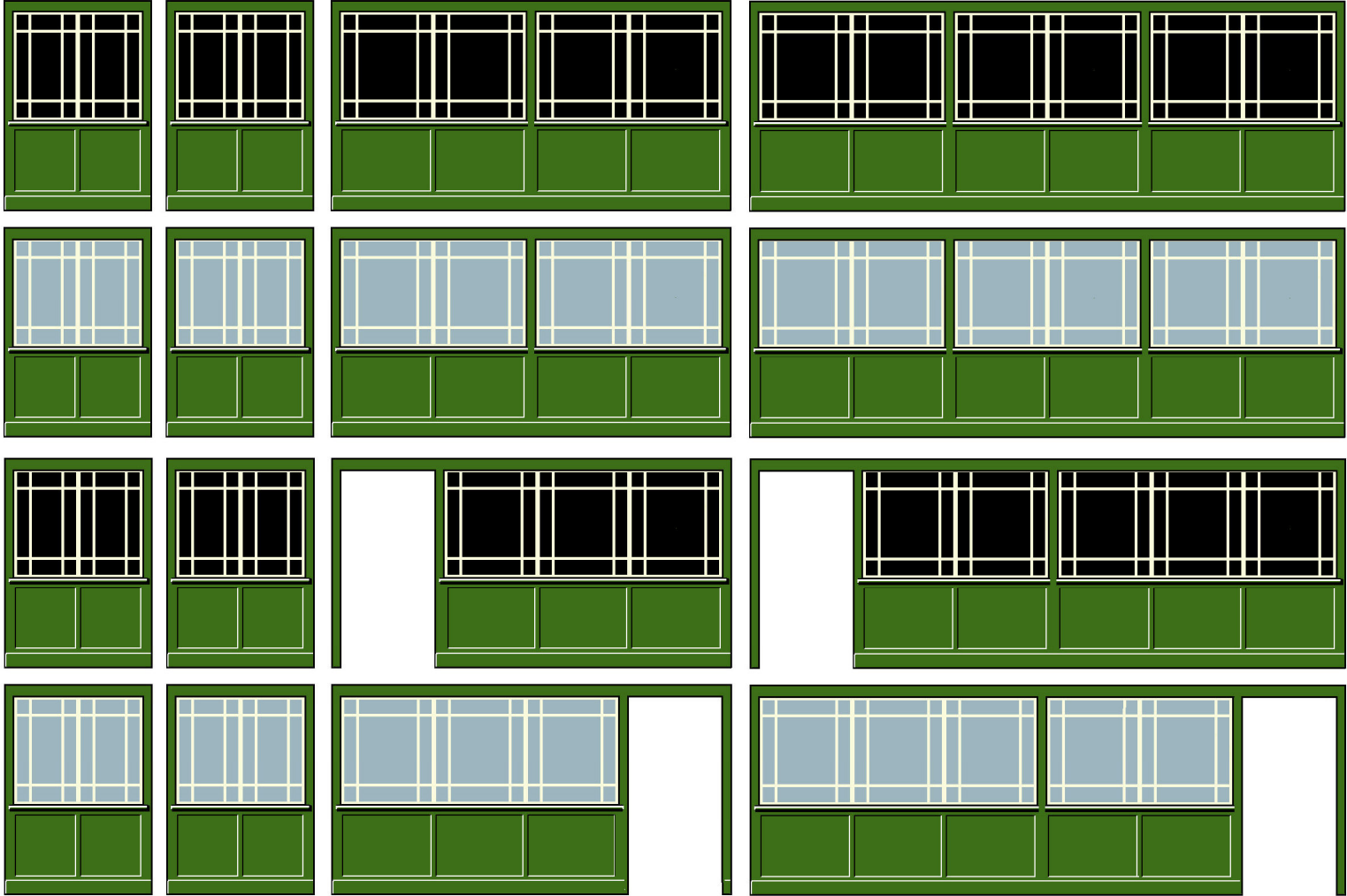
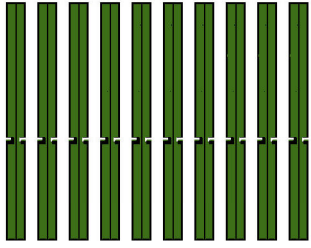
The model sheet contains components to make a two section shelter and a three section shelter, but different types can easily be produced by altering the lengths of sections, etc. The two shelters could be glued together to make one long one, using the joining strips.

The two roof templates and the two concrete floors should be glued to heavier card before assembly. The sections have black (outside) windows and blue (inside) windows and should be glued back-to-back in pairs. The roof templates are glued INSIDE the folding roof sections.

Some additional detailing has also been included. Bundy clocks appear on some photos affixed to the end of a shelter (see header photo for position). The small square bell boards could be fixed to the top right hand corner of the end windows. The "ALL CARS STOP HERE" notices should be glued back-to-back in pairs and attached to the roof. (These were often found attached to the side of tram standards and lamp posts). The destination boards were attached to the upper end windows.

JOINING STRIPS

BLACKPOOL CAST IRON TRAM SHELTER



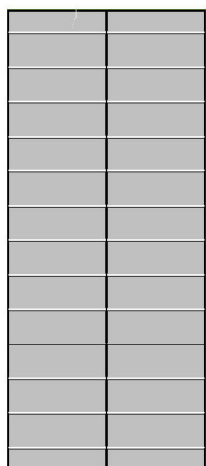
BUNDY CLOCKS



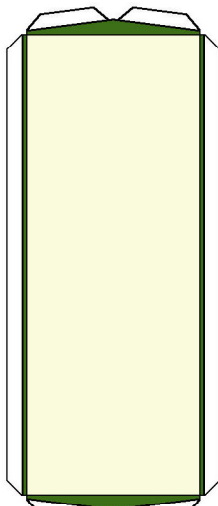
STOP SIGNS

TRAMS TO BLACKPOOL
 TRAMS TO FLEETWOOD
 BISPHAM | FLEETWOOD
 PLEASURE BEACH | SOUTH PROM
 PLEASURE BEACH | PROMENADE
 GYNN SQUARE | NORTH STATION

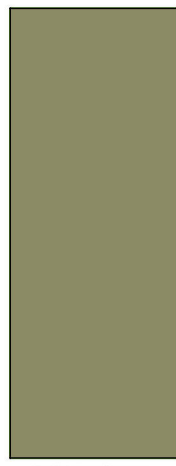
DESTINATION BOARDS



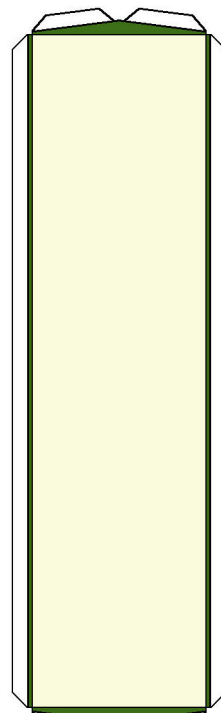
ROOF



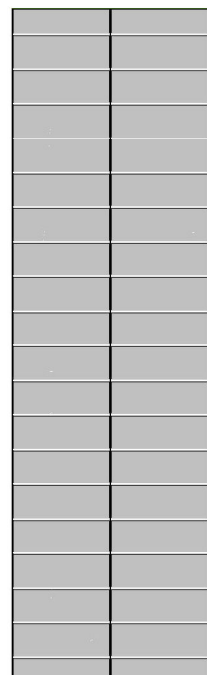
ROOF BASE



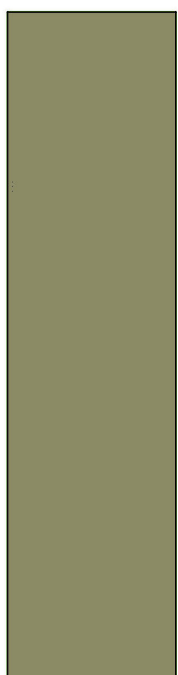
CONCRETE FLOOR



ROOF BASE



ROOF



CONCRETE FLOOR